

TABLE 2

United States Insect Vectors Infected with *Trypanosoma cruzi*

STATE	NUMBER COLLECTED	NUMBER EXAMINED	NUMBER INFECTED	PER CENT INFECTED
California.....	1063	816	204	25.00
Arizona.....	1652	699	28	4.00
New Mexico.....	226	208	2	0.96
Utah.....	58	51	0	0.00
Texas.....	442	379	25	6.59



A NEW SUBSPECIES OF *FOXELLA* *IGNOTA*
(BAKER) FROM CALIFORNIA (SIPHON-
APTERA: DOLICHOPSYLLIDAE)

By G. F. AUGUSTSON

Allan Hancock Foundation, The University of Southern California

The writer is once more in receipt of many fine ectoparasite specimens collected by J. C. Couffer of the Los Angeles County Museum. From this material appears some fleas apparently new to science which are here described and illustrated. Final determination of the host involved was made by J. C. von Bloeker, Jr.

FAMILY DOLICHOPSYLLIDAE

FOXELLA *IGNOTA* *COUFFERI* n. subsp.

Holotype Female

HEAD: Frontal notch small; maxillae acuminate; labial palpi slightly shorter than fore-coxa; genal process blunt, lightly chitinized; eye low, vestigial; preantennal region with two rows of bristles, the lower row with four of irregular length, upper row with eight bristles also of irregular length, numerous small setae mixed in between both rows; postantennal region with two bristles, one well up along the antennal groove, the other at the posterior corner of the antennal groove, many small setae along the posterior border of the antennal groove.

THORAX, ABDOMEN, AND LEGS: Pronotal ctenidium of ten slender spines on a side; metanotum with one, slender tergal tooth; first three abdominal tergites with two tergal teeth on each; three antepygidial bristles, the middle slightly longer than the outer, one-third longer than the inner; style short, abruptly terminated at apex, its length not exceeding twice its greatest width, one long terminal bristle, two dorso-lateral bristles the most distal of which is rudimentary, four ventro-lateral bristles of equal length; sternite VII very diagnostic, without a sinus, a single long, blunt to square, lower lobe; spermatheca globular, with a right-angle arm, at the end of which is a small appendix; legs as in other members of the genus.

Allotype Male

HEAD: Frontal notch, labial palpi, maxillae, eye, as in female; preantennal region with two rows of bristles as in female, more uniform, with only three bristles in upper row; postantennal region as in female (upper bristles broken in type).

THORAX, ABDOMEN, AND LEGS: Pronotum with a ctenidium of nine slender spines on a side; tergal teeth as in female; a single long, slender antepygidial bristle; modified abdominal segments very diagnostic, the finger is long, slender, of uniform width from base to apex, the process of the clasper long, acuminate, reaching to three-fourths the length of the finger; sternite VIII evidently close to *F. i. albertensis*, from which it differs in the fewer number of bristles along its ventral margin and the sharper, shorter free angle above the terminal bristles; legs as in other members of the genus.

Holotype: A ♀ collected from *Thomomys altivallis* Rhoads by J. C. Couffer near Big Bear Lake, San Bernardino County, California, July 2, 1942. Deposited in the Allan Hancock Foundation, The University of Southern California, Los Angeles, California.

Allotype: A ♂ collected and deposited as above.

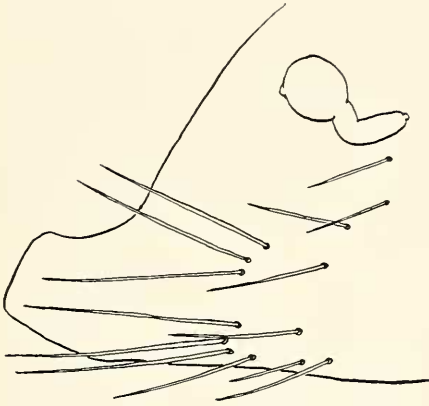
Paratype: A ♀ collected and deposited as above.

Type Host: *Thomomys altivallis* Rhoads.

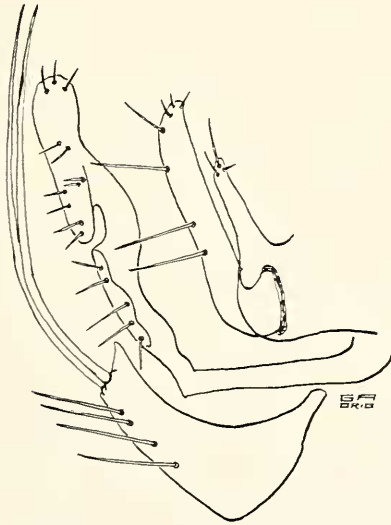
Type Locality: 2 miles east Big Bear Lake, San Bernardino Mountains, San Bernardino County, California.

Remarks: As already referred to, this subspecies is close to *F. i. albertensis* Jordan and Rothschild, 1915. However, little difficulty should be experienced in separating these two subspecies on the basis of their modified abdominal segments.

The writer takes great pleasure in naming this new subspecies in honor of J. C. Couffer, one of our most promising young Mammalogists in the Pacific Southwest.



1



2

PLATE 13

Fig. 1. *Foxella ignota coufferi* Augustson, sternite VII, spermatheca, holotype female.

Fig. 2. *Foxella ignota coufferi* Augustson, clasper, finger, sternites IX, VIII, allotype male.